



VCA38 & VCB38

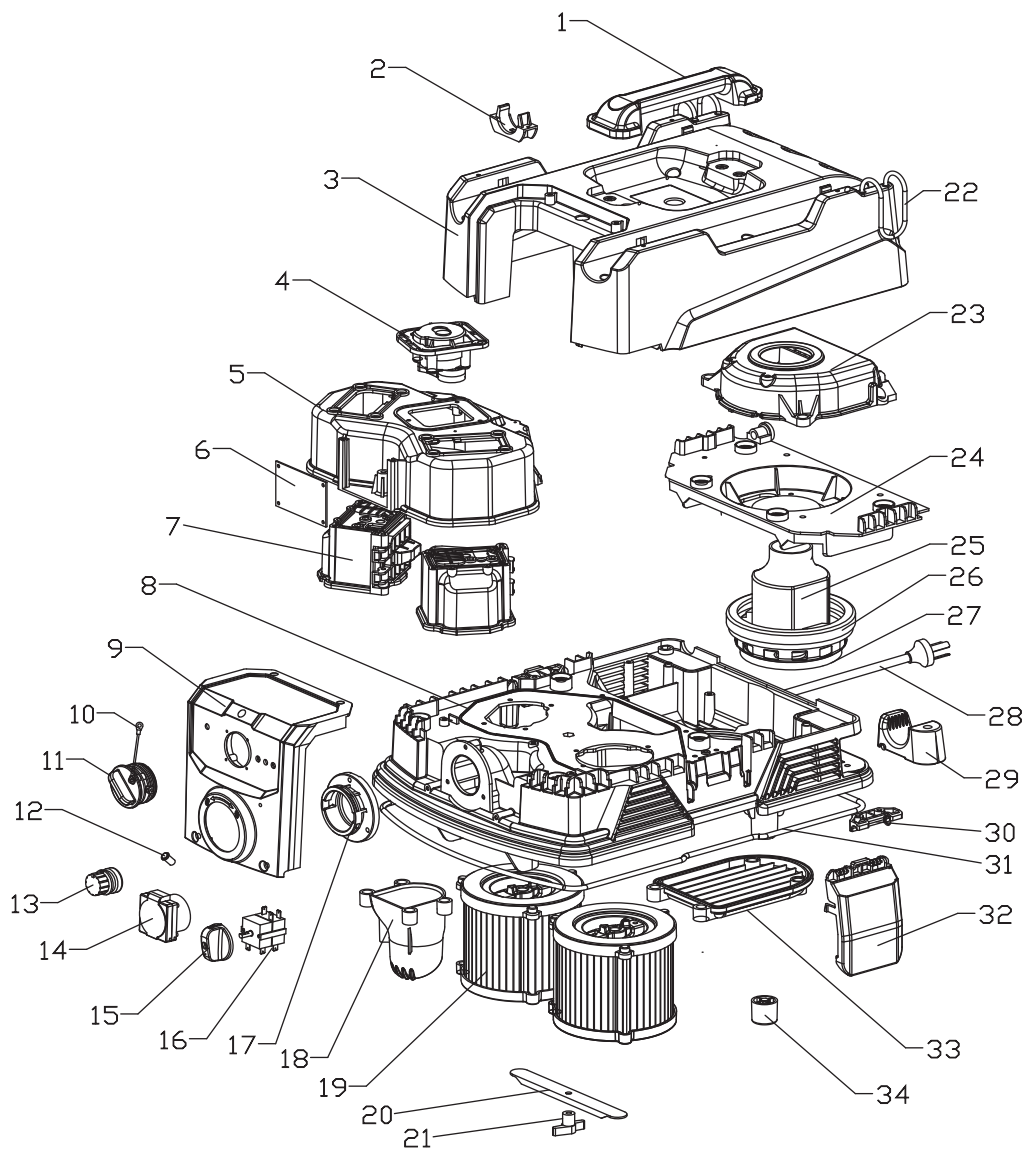
Usage Instructions

Industrial Vacuum Cleaner



Read before use





Spare Part List








| | |
|----|----------------------------------|
| 1 | Lifting handle |
| 2 | Hose clamp |
| 3 | Top cover |
| 4 | Driving module |
| | Driving module |
| 5 | Air hood |
| 6 | Control module PCB |
| 7 | Reversing valve assembly |
| | Reversing valve assembly |
| 8 | Center cover |
| 9 | Panel |
| 10 | Lanyard |
| 11 | Inlet seal complete set |
| 12 | Vacuum pressure indicating light |
| 13 | Airflow adjustment knob |
| 14 | 10A power output socket |
| 15 | Knob cap |
| 16 | Selector switch |
| 17 | Flanged fitting |
| 18 | Dust bag air inlet |
| 19 | Filter assembly |
| 20 | Filter support strip |
| 21 | Hand nut |
| 22 | Elastic string |
| 23 | Motor cover |
| 24 | Motor holder |
| 25 | Single phase bypass motor |
| | Single phase bypass motor |
| 26 | Motor damping ring |
| 27 | 118 motor damping ring |
| 28 | Power cord with plug 230V |
| | Power cord with plug 110V |
| 29 | Hose holder |
| 30 | Buckle holder |
| 31 | Sealing ring |
| 32 | Buckle |
| 33 | Cover plate |
| 34 | Foot pad |

INDEX

- 1 Safety Warnings
- 2 Application
- 3 Using Instructions
- 4 Cleaning and Maintenance
- 5 Accessorie
- 6 Environmental Protections
- 7 Warranty
- 8 Trouble Shooting

Symbols

The following are the icons that are used for the tool. Make sure you fully understand them before using them.

| | | | |
|---|------------------|---|-------------------------|
|  | Read before use |  | Wear safety gloves |
|  | CE mark |  | Wear hearing protectors |
|  | Caution |  | Wear safety glasses |
|  | Conforms to WEEE | | |

1. Safety Warnings

⚠ Caution

Read all safety instructions and warnings provided with power tool. Failure to follow the instructions below may result in electric shock, fire and / or serious injury.

Keep all warnings and instructions for future reference.

The term "power tool" used in the safety instructions refers to mains operated power tools (with power cord) or to battery operated tools (without power cord).

General safety warnings for power tools

1.1 Safety in work area

- a) **Keep your work area clean and well lit.** Disarray or unlit work areas can lead to accidents.
- b) **Do not work with the power tool in a potentially explosive environment in which flammable liquids, gases or dusts are present.** Power tools generate sparks that can ignite the dust or fumes.
- c) **Keep children and bystanders away while using the power tool.** Distractions can result in a loss of control.

1.2 Electrical Safety

- a) **The plug of the power tool must fit into the socket. The plug must not be changed in any way.** Do not use adapter plugs together with electrically grounded power tools. Unmodified plugs and matching sockets reduce the risk of electric shock.
- b) **Avoid body contact with grounded surfaces such as pipes, heaters, stoves, and refrigerators.** There is an increased risk of electric shock if your body is grounded.
- c) **Keep power tools away from rain or moisture.** The penetration of water into a power tool increases the risk of electric shock.
- d) **Do not misuse the power cord to carry the power tool, hang it up, or unplug it from the power outlet.** Keep the connection cable away from heat, oil, sharp edges or moving parts. Damaged or entangled leads increase the risk of electric shock.
- e) **When working outdoors with a power tool, only use extension cables that are also suitable for outdoor use.** Using an extension cord suitable for outdoor use reduces the risk of electric shock.
- f) **If operation of the power tool in a damp environment is unavoidable, use a residual current device.** Using a residual current circuit breaker reduces the risk of electric shock.

1.3 Personal Safety

- a) **Be attentive, pay attention to what you are doing and be reasonable about working with a power tool. Do not use a power tool when you are tired or under the influence of drugs, alcohol or medication.** A moment of carelessness when using the power tool can cause serious injury.
- b) **Wear personal protective equipment and always safety goggles.** Wearing personal protective equipment such as a dust mask, non-slip safety shoes, hard hat or ear protection, depending on the type and use of the power tool, reduces the risk of personal injury.
- c) **Avoid unintentional startup. Make sure that the power tool is switched off before connecting, receiving or carrying it to the power supply and / or the battery.** Keeping your finger on the switch when you are wearing the power tool or plugging the power tool into power can cause an accident.
- d) **Remove setting tools or wrenches before turning on the power tool.** A tool or key located in a rotating part of the power tool can cause injury.
- e) **Avoid an abnormal posture. Ensure a secure footing and maintain balance at all times.** This allows you to better control the power tool in unexpected situations.
- f) **Wear suitable clothing. Do not wear loose clothing or jewelry.** Keep hair and clothing away from moving parts. Loose clothing, jewelry or long hair can be caught by moving parts.
- g) **If dust extraction and collection equipment can be installed, they must be connected and used properly.** Using a dust extractor can reduce dust hazards.

- h) Do not weigh yourself in false safety and do not overstep the safety rules for power tools, even if you are familiar with the power tool after many uses.** Careless action can lead to serious injuries within fractions of a second.

1.4 Use and care of the power tool

- a) Do not overload the power tool. Use the appropriate power tool for your work.** With the right power tool you work better and safer in the specified power range.
- b) Do not use a power tool whose switch is defective.** A power tool that can not be turned on or off is dangerous and must be repaired.
- c) Unplug the power cord and / or remove a detachable battery before making any adjustments to the device, changing the tool bits, or putting the power tool away.** This precaution prevents the unintentional start of the power tool.
- d) Store unused power tools out of the reach of children. Do not allow persons to use the power tool that are unfamiliar or have not read these instructions.** Power tools are dangerous when used by inexperienced people.
- e) Maintain power tools and insert tools with care. Check that moving parts are working properly and do not jam, that parts are broken or damaged enough to impair the functioning of the power tool. Have damaged parts repaired before using the power tool.** Many accidents are caused by badly maintained power tools.
- f) Keep cutting tools sharp and clean.** Carefully maintained cutting tools with sharp cutting edges become less jammed and easier to guide.
- g) Use power tools, accessories, tools etc. according to these instructions. Take into account the working conditions and the activity to be performed.** The use of power tools for other than intended applications can lead to dangerous situations.
- h) Keep handles and grips dry, clean and free of oil and grease.** Slippery handles and gripping surfaces do not allow safe operation and control of the power tool in unforeseen situations.

1.5 Use and care of the battery tool

- a) Charge the batteries only with chargers recommended by the manufacturer.** A charger suitable for a particular type of battery may cause a fire when used with other batteries.
- b) Use only the appropriate batteries in the power tools.** Use of other batteries may cause injury or fire.
- c) Keep the unused battery away from paper clips, coins, keys, nails, screws, or other small metal objects that could cause the contacts to bridge.** A short circuit between the battery contacts can cause burns or fire.
- d) If used incorrectly, liquid may leak from the battery. Avoid contact with it. In case of accidental contact, rinse with water. If the fluid gets into your eyes, seek additional medical attention.** Leaking battery fluid may cause skin irritation or burns.
- e) Do not use a damaged or modified battery.** Damaged or altered batteries can behave unpredictably and cause fire, explosion or injury.
- f) Do not expose a battery to fire or high temperatures.** Fire or temperatures over 130 ° C can cause an explosion.
- g) Follow all charging instructions and never charge the battery or the cordless tool outside the temperature range specified in the operating instructions.** Incorrect charging or charging outside the permitted temperature range can destroy the battery and increase the risk of fire.

1.6 Service

- a) Only have your power tool repaired by qualified personnel and only with original spare parts.** This ensures that the safety of the power tool is maintained.
- b) Never use damaged batteries.** All battery maintenance should only be done by the manufacturer or authorized service centers. Follow the instructions for lubricating and changing accessories.

Additional safety warnings from the manufacturer

Power connection

Connect the electric plug to a power outlet with the correct voltage

- Make sure that the power cord or extension cables are not damaged by running over, pinching, dragging or similar. Protect the cable from heat, oil, and sharp edges.
- The power cord and the extension cable must be checked regularly for damages; such as cracks or aging. If damage is found, the cable must be replaced before further use.
- Do not connect the machine to an unearthed socket

Never vacuum up the following materials:

- Do not vacuum up any burning or glowing objects.
- Certain materials may produce explosive vapors or mixtures when agitated by the suction air
- Explosive or combustible gases, liquids and dust particles (reactive dust particles)
- Reactive metal dust particles (such as aluminum, magnesium, zinc) in combination with highly alkaline or acidic detergents
- Undiluted, strong acids and alkalis
- Organic solvents (such as petrol, paint thinners, acetone, heating oil).

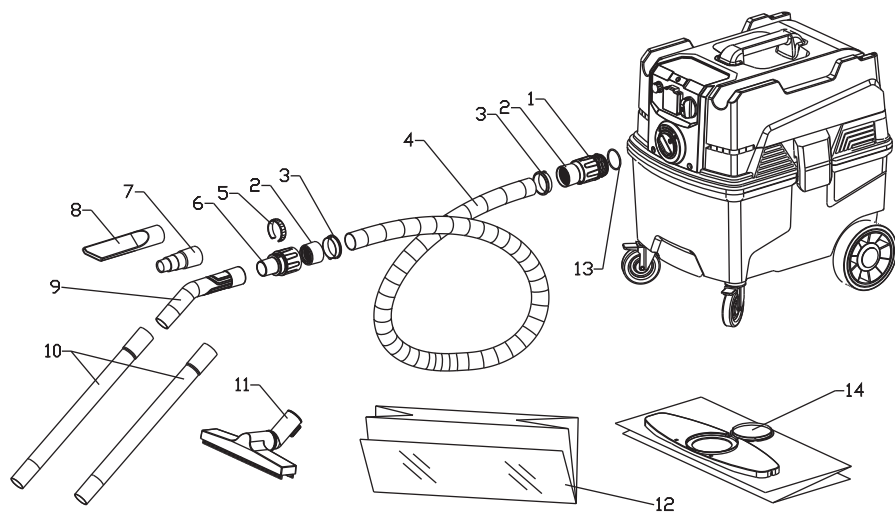
In addition, these substances may cause the device materials to corrode.

2. Application

- The innovative auto clean system ensure the vacuum works at high suction all the time without clogging, providing a continuous use model
- Equipped with 2 HEPA filters stops 99.95% of fine dusts at 0.3um.
- Wet and dry for liquids and dry solids extraction
- 38L injection molding tank provides big storage capacity
- Power socket for power tool use activates automatically on start/ shut-down of the vacuum cleaner
- Suction power control for adapted suction performance
- Automatic trailing mechanism for emptying the suction hose competely
- Large and robust wheels and castors built to withstand the tough construction site
- Cable wrap for convenient cord storage
- Practical accessory case and storage area.

| Data | VCB38 | VCA38 |
|----------------------|-------------------------|-----------|
| Voltage(V) | 230V/50HZ | 110V/60HZ |
| Power(MAX) | 1.2KW | 1.85HP |
| Airflow(MAX) | 154 | 153 |
| Water lift | 250Mbar | 104Inch |
| Filter quantity | 2Pcs | |
| Filter efficiency | HEPA, >99.95%@0.3um | |
| Filter cleaning | Innovated auto cleaning | |
| Airflow adjustable | YES | |
| Power socket | 2000W | 1200W |
| Remote control start | Optional | |
| Tank capacity | 38L | 10Gal |
| Dimensions (LxWxH) | 385x500x570mm | |
| Weight | 13.5kg | 30lbs |
| Dust Class | H Class | |

Manufacturer reserves the right to change specifications without notice.
Specifications may differ from country to country



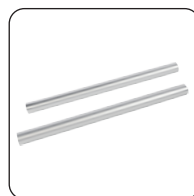
Anti-static hose 4M



Floor brush 1PC



Handle 1PC



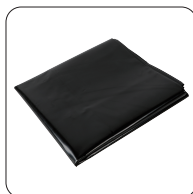
Wand 2PCS



Plastic crevice tool 1PC



Reducer adapter



Dust bag



Dust collection bag

Spare Part List

| | | | |
|---|-------------------------|----|---------------------|
| 1 | Hose cuff 1-vacuum side | 8 | Crevice tool |
| 2 | Thread tightening head | 9 | Bent wand handle |
| 3 | Bayonet coupling | 10 | Straight wand |
| 4 | Anti-static hose | 11 | Floor brush |
| 5 | Airflow adjust ring | 12 | Dust bag |
| 6 | Hose cuff 2-handle side | 13 | O shape ring |
| 7 | Reducer adapter | 14 | Dust collection bag |

3. Using Instructions

3.1 Starting Ups

Bring the device to working position- secure it, if required, by locking the caster brakes.

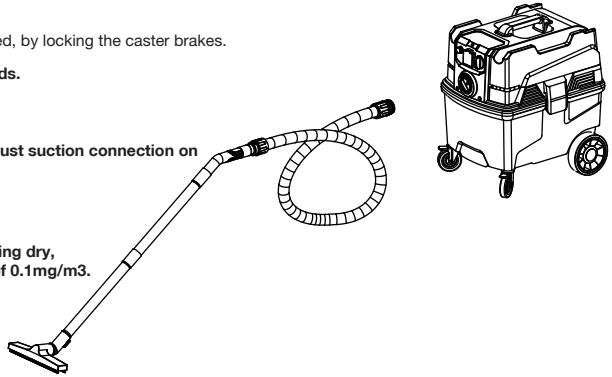
3.1.1 Connect the floor brush with the 2 straight wands.

- Connect the hose with the wand via hose-cuff.
- Connect the hose with the adaptor via hose-cuff

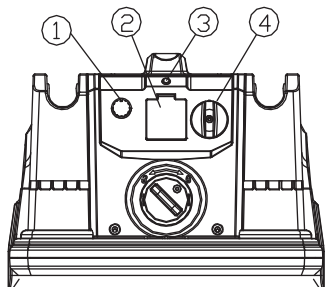
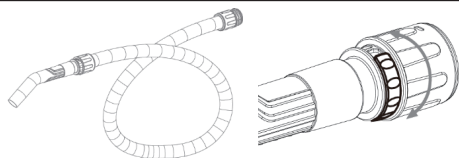
Finally, the floor tool set should be attached to the dust suction connection on the device. Remember to tighten the knob.

FUNCTION

The machine is designed for vacuuming and separating dry, non-combustible dust with an explosion limit value of 0.1mg/m3.



3.1.2 The dust extractor is started by the switch.

| | |
|---|---|
| <ol style="list-style-type: none"> 1. Motor speed control switch 2. Socket (Power supply for power tools) 3. Vacuum pressure indicating light (light will be on when filter blocked, need to clean filter deeply.) 4. Power switch On/Off/Auto <p>On Start vacuum</p> <p>0 Shutdown vacuum</p> <p>Auto Start vacuum by the connected power tool, after power tool stops, vacuum will stop after 7 seconds delay</p> |  |
| <p>There's a airflow adjusting ring on the handle, Airflow can be adjusted by rotating the adjusting ring, to meet different dust vacuuming needs.</p> |  |

⚠ WARNING

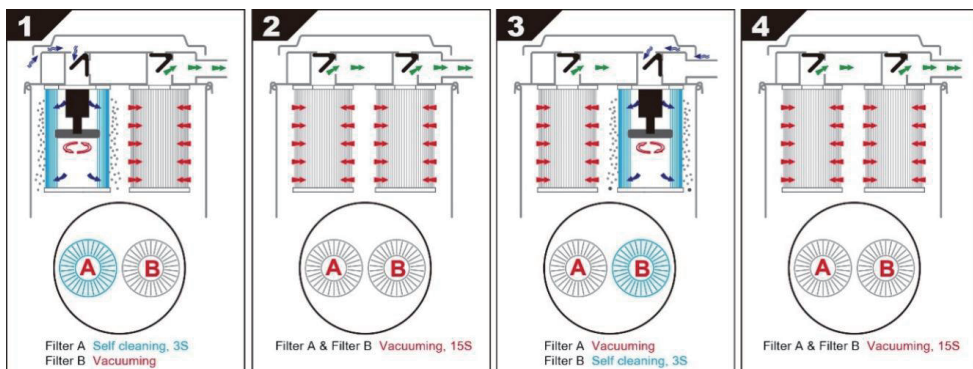
- Make sure the electric plug and socket are matching
- Turn off the machine until the motor stop working completely.
- Make sure the hose and inlet are matching
- Please disconnect the plug when the machine doesn't work.
- Connect the accessories and hose end

Dust-laden air is then sucked through the inlet valve at high speed via the suction hose. The air is slowed down by the cyclone and coarse dust particles are separated out, partly by centrifugal force and partly by gravity. Air and finer particles then pass through the filter system where separation is made. The machine is designed for filter cleaning by auto cleaning.

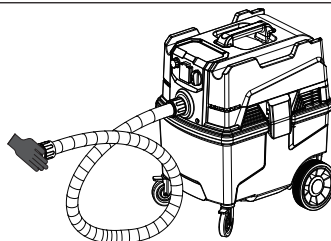
The separated dust accumulates in the cyclone until the machine is switched off, when it drops through the bottom flap into the dust collection tank. The filter cleaning process is not completed before it is clear that the dust inside the tank has fallen down into the collection tank. In some extreme cases the adhesive ability of the dust must be broken manually. This can be done by hitting the dust through the bag or tapping the tank using i.e. a rubber hammer.

3.2. Innovated auto cleaning

When start the vacuum, 2 filters will be cleaned alternately and automatically. See instructions:



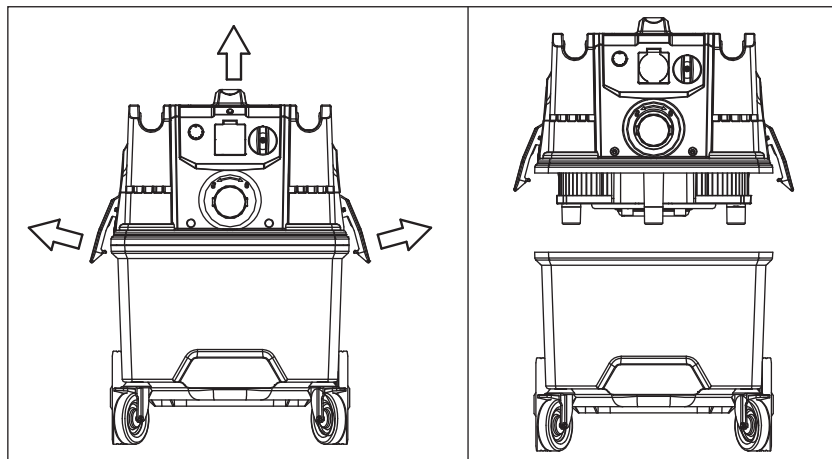
In some special application, filter may be blocked, recommend the filter deep cleaning: start vacuum, cover the inlet with hand for 60 seconds.



If suction remains poor afterwards, the filters need to be replaced. See instructions in chapter FILTER CHANGE.

3.3 Emptying the dust collecting tank

- To avoid too much filling of the dust collecting tank, need to check it regularly depending on the type and volume of the sucked in material.
- Shut down the device and secure it using the parking brakes at the casters.
- Open the both sides buckle to separate the upper and lower container, fasten the dust collecting bag and take out from lower container.
- Put a new bag in lower container and make sure the holes of the bag inside of the lower container, and then close both sides buckles.

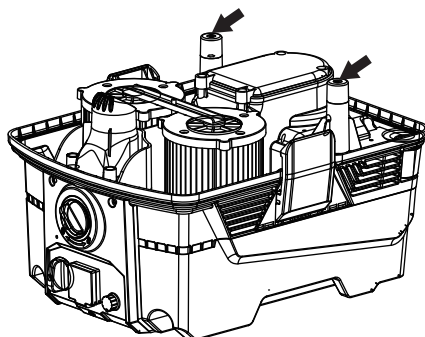


3.4 Liquid level sensor

When start the vacuum, 2 filters will be cleaned alternately and automatically. See instructions:

- Remove the dust collection bag, use the machine to suck water, max water suction capacity is 21L, vacuum stops automatically when water suction is full, turn on the switch "0" at this time, remove the upper container, empty the lower container, and then install the upper container, vacuum can start working.

- The liquid level sensor probe should be cleaned regularly, keep the probe clean, prevent poor contact, resulting in the failure of the liquid level sensing function.g.



3.5 Filter change

Risk of dust dispersion - Use personal safety equipment

Unhealthy dust can be spread during filter change. Accordingly, the user should wear protective glasses, protective gloves, and a breathing mask conforming to protection class FFP3.

⚠ WARNING

Remember to switch off the machine and pull the plug out of the outlet before servicing.

Main filter:

Loosen the 2 buckles of both sides and remove the upper container, twist off the center screw on the metal strip and remove, take out the old filter and insert a new filter.

⚠ WARNING

If you are removing the filter in order to clean it. Hitting the filter with force or use of compressed air will destroy the filter. It can handle water, but high-pressure water cleaning will destroy it.

4. Cleaning and Maintenance

- Switch off the device and in case of devices connected to the power outlet, pull out the power cord before cleaning and performing any maintenance tasks on the machine. Shut the device off when switching to a different function.
- Maintenance work may only be carried out by approved customer service outlets or experts in this field who are familiar with the respective safety regulations.

Empty and clean the vacuum cleaner after every use and whenever necessary.

No outside help is required for carrying out basic maintenance and cleaning. The device surface and the inside of the tank should be cleaned regularly using a damp cloth.

- Do not clean the device with a water hose or high pressure water jet (danger of short circuits or other damage). Do not immerse the motor head into water for cleaning purposes.
- Empty the dust-collecting tank (refer chapter "emptying the dust collecting tank ").
- Vacuum and wipe the device inside and outside with a damp cloth.
- This device must only be stored in a dry room, out of reach of unauthorized persons.

▲ WARNING

- When cleaning and servicing the machine, you must switch off the machine, cut down the power tools from vacuum socket and remove the plug from the outlet.
- Avoid cleaning with a high-pressure cleaner. If necessary, do not direct at the openings on the machine, especially the opening for cooling air.
- Before moving the machine from the work area, the machine must be cleaned.
- All other equipment must be regarded as contaminated and be treated thereafter.
- If possible, use a special suitable room.
- Proper personnel protective equipment must be used. Dust can be spread when the coarse filter and the absolute filter are replaced that can be hazardous to health. Accordingly, the user should wear protective glasses, protective gloves, and a breathing mask conforming to protection class FFP3.
- All parts which are contaminated after service must be properly disposed of in plastic bags according to all regulations.
- If the machine has to be used for other purposes, it is extremely important that the machine is cleaned, to avoid the spread of hazardous dust.
- Do not puncture the filter. Risk of dust dispersion.

5. Accessories

- This accessory is recommended for use with your device specified in this manual.
- Using other accessories or attachments may result in personal injury. Only use accessories or accessories for the stated purpose.

6. Environmental Protection

- Do not dispose of electrical appliances in the household waste.
- Follow the local provisions for the disposal of electrical or battery products.
- Valuable materials can be recovered by recycling.
- The electrical or battery components used for construction are in accordance with the regulation European Directive 2012/19 / EU on waste electrical and electronic equipment and transposition into national law., used electrical appliances must be collected separately and recycled in an environmentally sound manner.
- The packaging material can be recycled. Please do not throw the packaging material into household waste; please send it for recycling.
- Contact us for further information.

**7. Warranty**

- The guarantee covers all manufacturing or assembly defects in accordance with the legislation in force. The guarantee does not cover malfunctions caused by improper use, overloads, failure to follow the operating instructions and normal wear and tear.
- For more details and information, consult the general guarantee conditions at www.bihuitools.com

8. Trouble Shooting

The dust extractors are designed and manufactured for severe environments and tasks, but the user must note that the machine must be protected from knocks and blows. Filter, seals, attachments, and connections are carefully adapted and selected with regard to the operator's work environment. Therefore, the operator and service personnel must treat the machine with care in order for it to work correctly for many years.

| Issue | Cause | Solution |
|--|--|-----------------------------|
| Motor doesn't start | No Power | Plug in machine |
| | Cable defective | Replace cable |
| | Switch defective | Replace switch |
| Motor stops immediately after starting | Shortcut in cable/machine | Order service |
| Motor runs but there is no vacuum | Hose not connected | Connect hose |
| | Hose clogged/blocked | Clean hose |
| | No dust collection bag | Fit dust collection system |
| Motor runs but poor vacuum | Hole in hose | Replace hose |
| | Filter clogged | Clean filter/Replace filter |
| | Loose top cover | Adjust |
| | Defective gaskets | Replace affected gaskets |
| Dust blown from motor | Wrongly assembled or damaged filter system | Adjust/Replace filters |
| Abnormal noise | Contact the manufacturer | |