

T-rør m/pakninger, isol.

NO

ART.NR. 116515, 116519



T-rør m/pakninger og montert kondensisolering.
Brukes i uteluft- og avkastkanaler.
Produktet er for å hindre kondens der inntak/avkast kanal ligger i varm sone.

116515, 116519

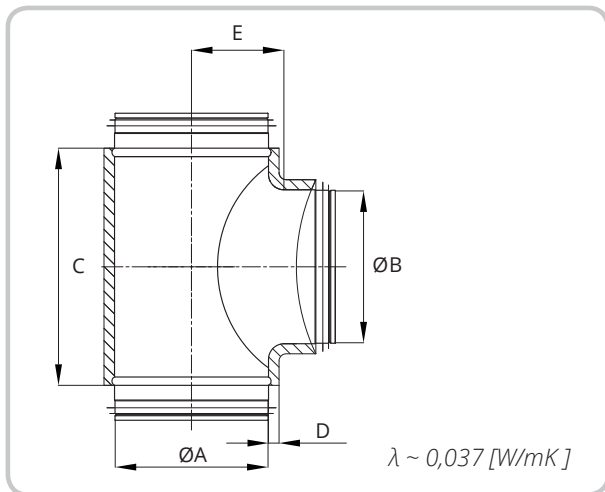
- Spar tid og plass.
- Gir sikker kondensbeskyttelse.
- Letter arbeidet med montering mellom aggregat og isolert kanal.

Art.nr.	NOBB	GTIN	Diam.
116515	53056481	7023671165154	Ø200/Ø160 mm
116519	53056496	7023671165192	Ø200/Ø200 mm

Materiale

Galvanisert stål, gummipakninger og svart cellegummiisolering 19 mm. ($\lambda \sim 0,037$ [W/mK])

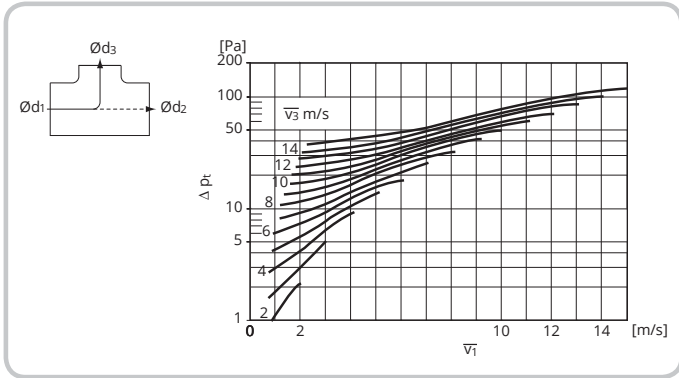
Målskisse



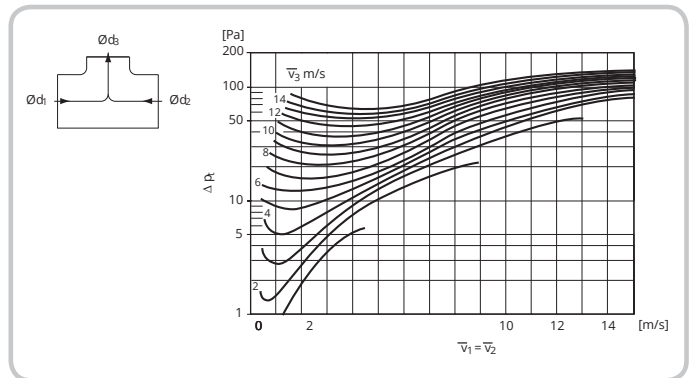
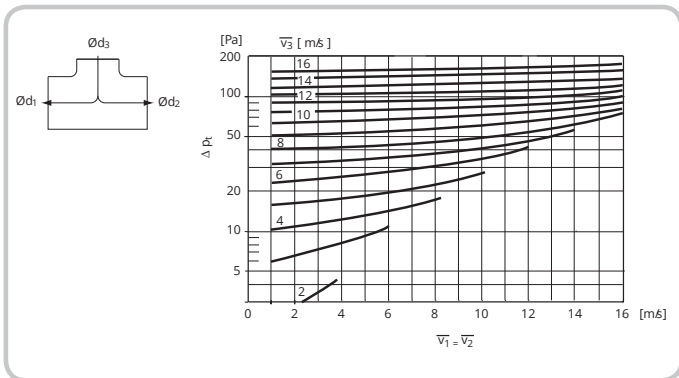
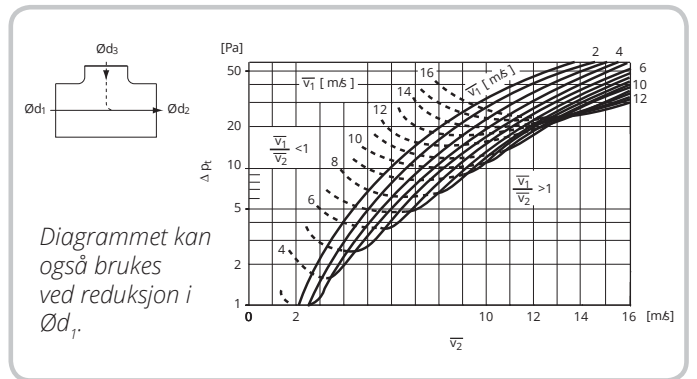
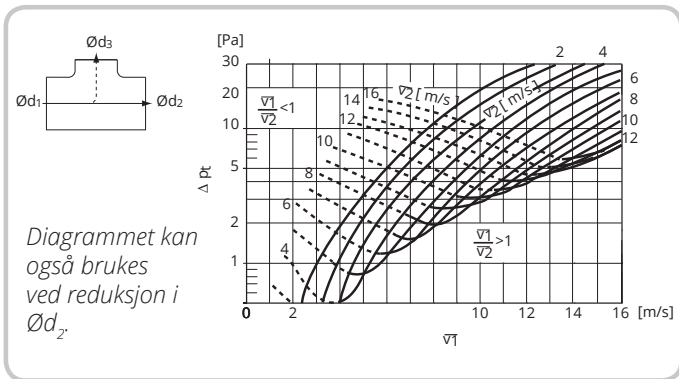
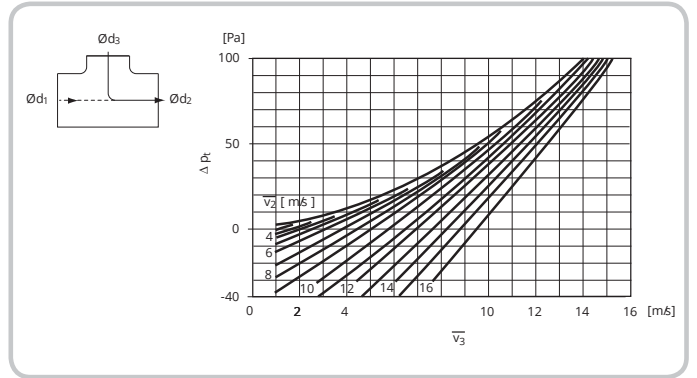
ØA	ØB	C	D	E	Vekt
mm	mm	mm	mm	mm	kg
200	160	281	19	125	0,93
200	200	265	19	125	1,38

Trykkfallsdiagram

Tilluft



Avtrekk



For mer informasjon, se www.flexit.no og monteringsveiledning: 94007 FDV-KANALSYSTEM/TILBEHØR



T-rör m/packningar, isol.

SV

ART.NR. 116515, 116519



T-rör m/packningar och monterad kondensisolering.
Används i uteluft- och avluftskanaler.
Produkten är till för att förhindra kondens där utelufts-/
avluftskanalen ligger i en varm zon.

116515, 116519

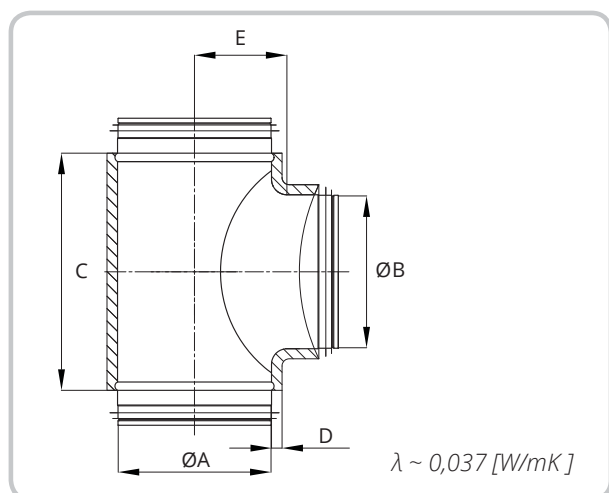
- Spar tid och plats.
- Ger säkert kondensskydd.
- Underlättar montering mellan aggregat och isolerad kanal.

Art.nr.	GTIN	Diam.
116515	7023671165154	Ø200/Ø160 mm
116519	7023671165192	Ø200/Ø200 mm

Material

Stål förzinkad, gummipackningar och svart cellgummiisolering 19 mm. ($\lambda \sim 0,037$ [W/mK])

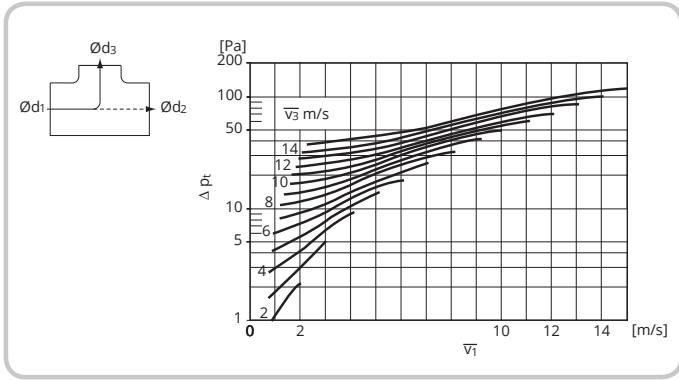
Måttskiss



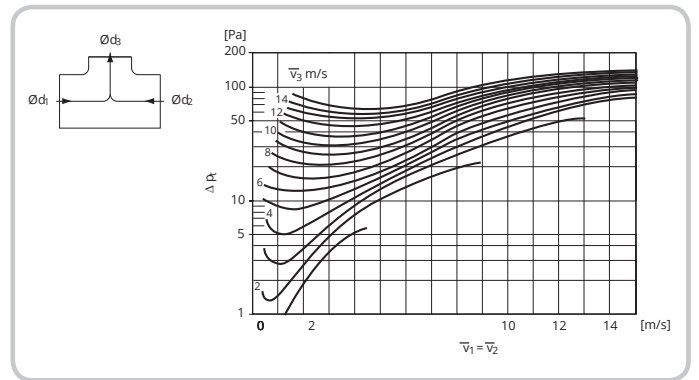
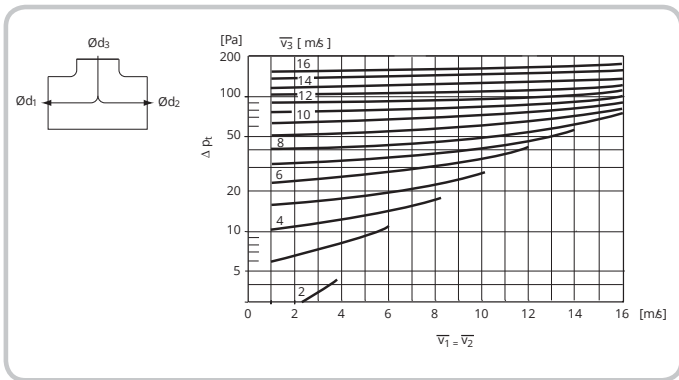
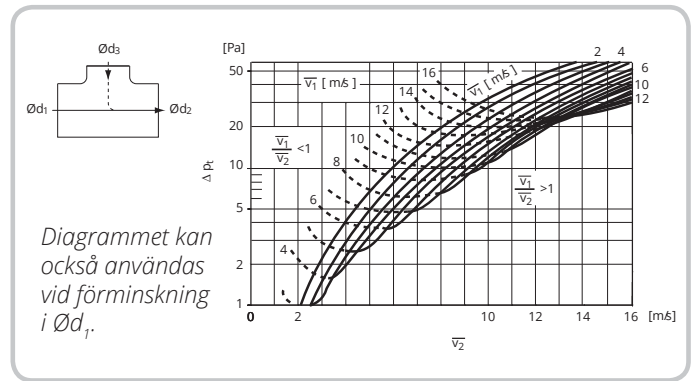
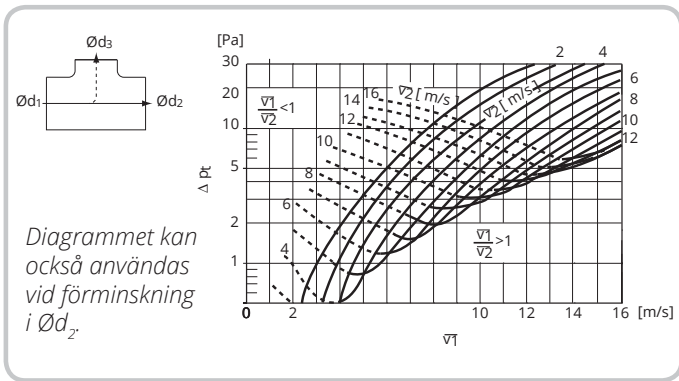
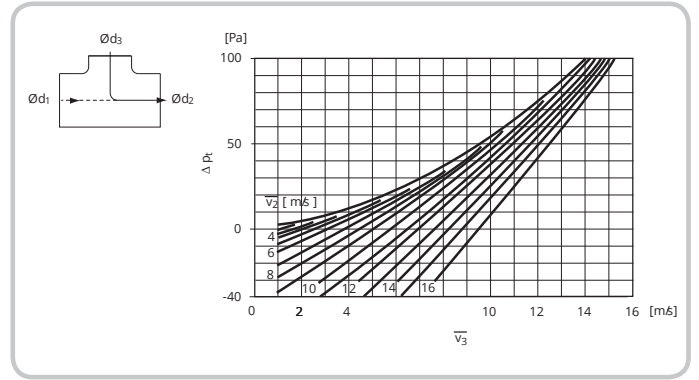
$\varnothing A$	$\varnothing B$	C	D	E	Vikt
mm	mm	mm	mm	mm	kg
200	160	281	19	125	0,93
200	200	265	19	125	1,38

Tryckfallsdiagram

Tilluft



Frånluft



För mer information, se www.flexit.se och monteringsanvisning: 94007 FDV-KANALSYSTEM/TILLBEHÖR



T-rør m/pakninger, isol.

DA

ART.NR. 116515, 116519



Kort bøjning 90° med muffe/studs og monteret kondensisolering. Anvendes i udeluft- og udsugningskanaler. Produktet skal forhindre kondensering, da indtags-/aftrækskanalen ligger i en varm zone.

116515, 116519

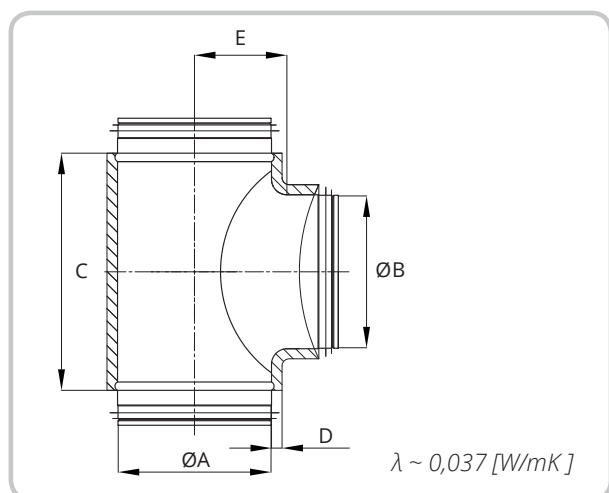
- Sparer tid og plads.
- Giver sikker kondensbeskyttelse.
- Sikrer nemmere montering mellem aggregat og isoleret kanal.

Art.nr.	GTIN	Diam.
116515	7023671165154	Ø200/Ø160 mm
116519	7023671165192	Ø200/Ø200 mm

Materiale

Stålforzinket, gummipakninger og sort cellegummiisolering, 19 mm. ($\lambda \sim 0,037$ [W/mK])

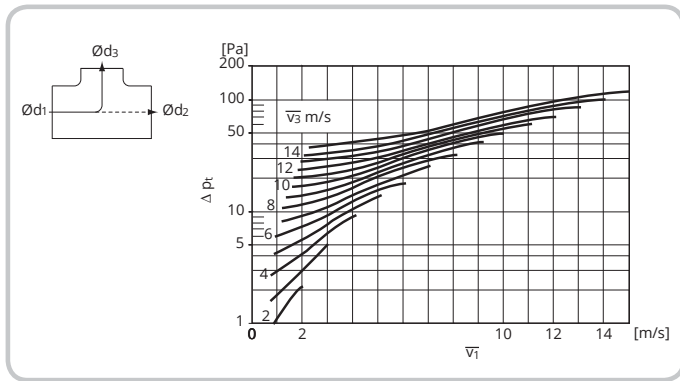
Måltegning



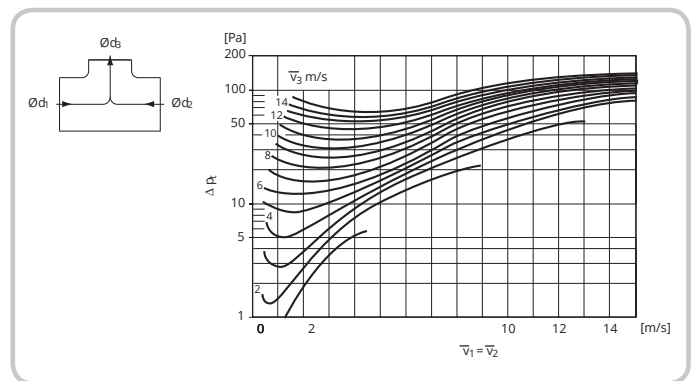
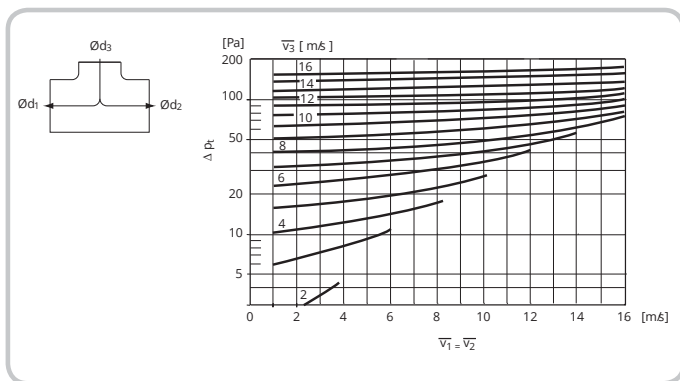
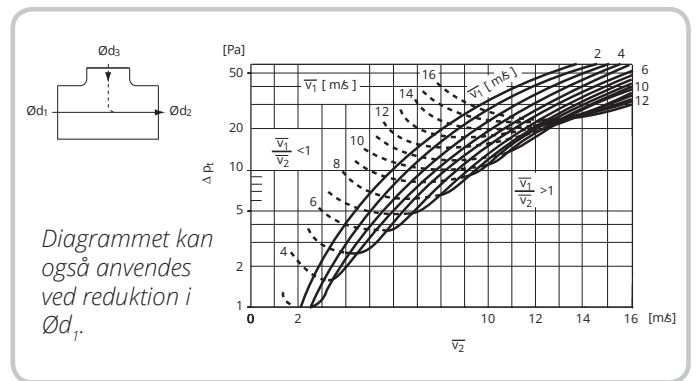
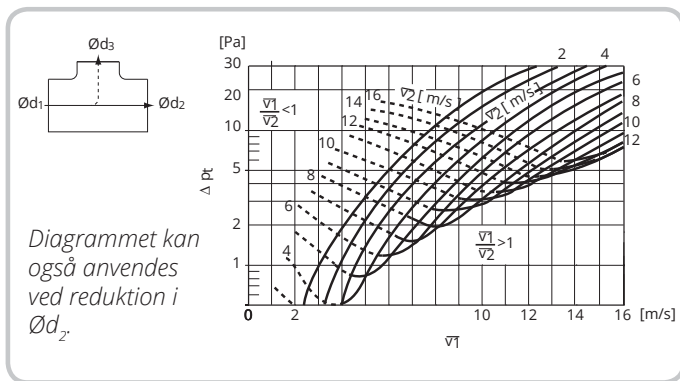
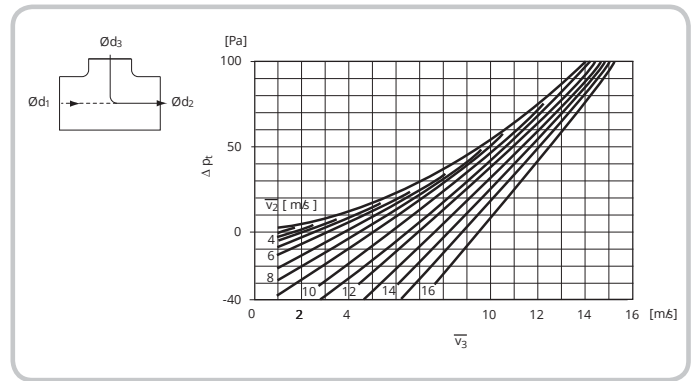
ØA	ØB	C	D	E	Vægt
mm	mm	mm	mm	mm	kg
200	160	281	19	125	0,93
200	200	265	19	125	1,38

Trykfaldsdiagram

Indblæsningsluft



Udsugningsluft



Læs mere på www.flexit.com og i monteringsvejledningen:
94007 FDV-KANALSYSTEM/TILBEHØR



T-osa sekä tiiviste eristyksellä



TUOTENRO. 116515, 116519



T-osa sekä tiiviste ja asennetulla kondenssieristyksellä. Käytettäväksi ulko- ja poistoilmakanavissa. Tuote estää kosteuden tiivistymistä lämpimissä tiloissa oleviin tulo-/poistokanaviin.

116515, 116519

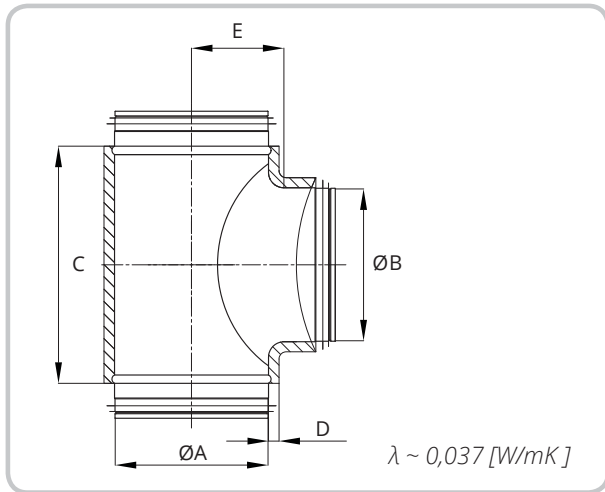
- Säästää aikaa ja tilaa.
- Turvaa kondenssisuojan.
- Putkikäyrä helpottaa asennusta aggregaatin ja eristetyn kanavan välillä.

Art.nr.	GTIN	Läpimitta.
116515	7023671165154	Ø200/Ø160 mm
116519	7023671165192	Ø200/Ø200 mm

Materiaali

Sinkitty, kumitiivisteet ja musta kumieriste 19 mm. ($\lambda \sim 0,037$ [W/mK])

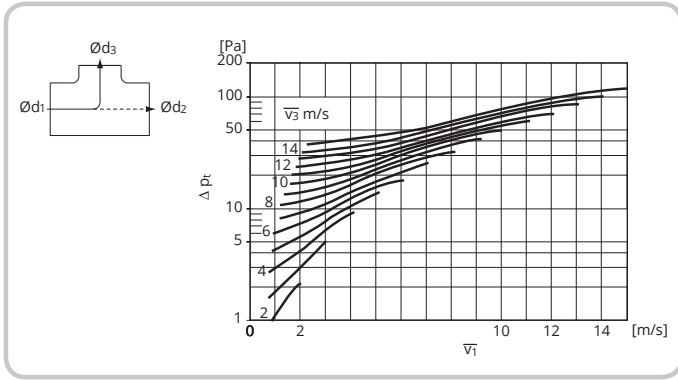
Mittakaaviot



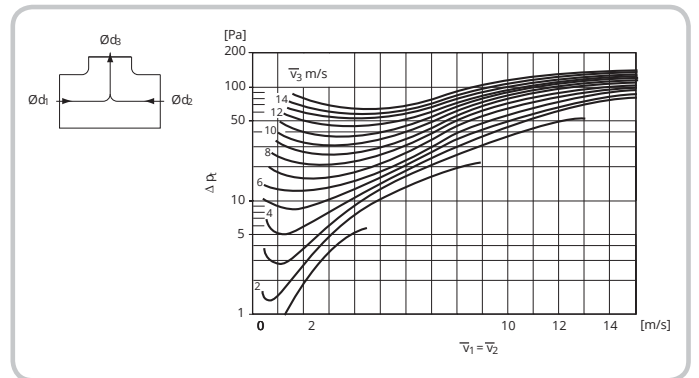
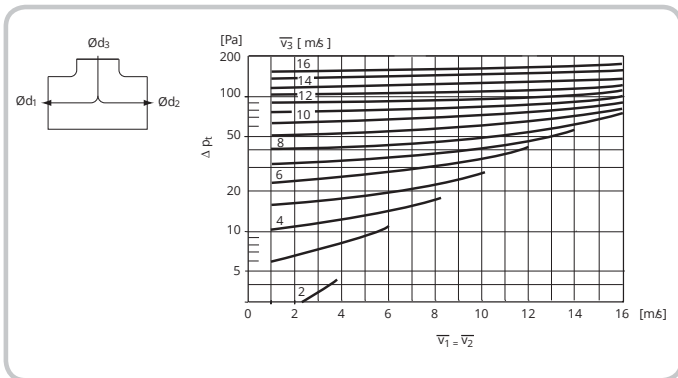
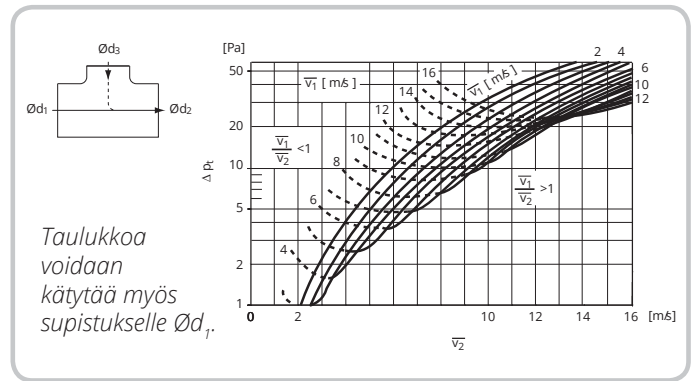
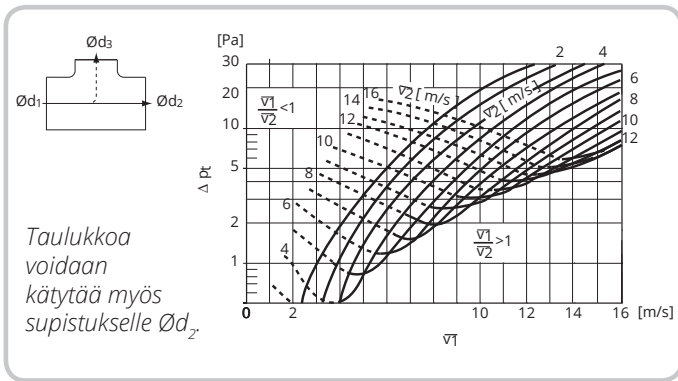
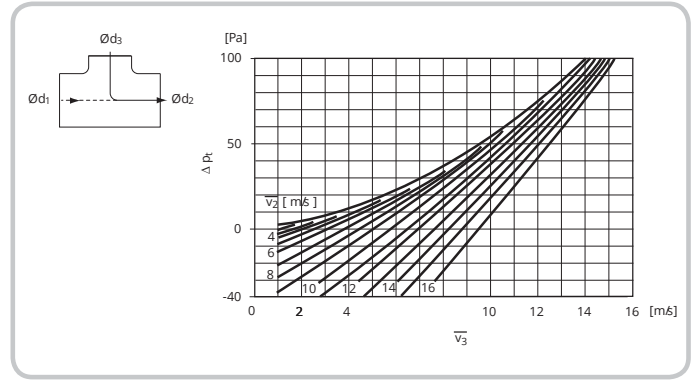
$\varnothing A$	$\varnothing B$	C	D	E	Paino
mm	mm	mm	mm	mm	kg
200	160	281	19	125	0,93
200	200	265	19	125	1,38

Painehäviökaavio

Tuloilma



Poistoilma



Lisätietoja on osoitteessa www.flexit.com ja asennusohjeessa:
94007 FDV-KANAVAJÄRJESTELMÄ / LISÄLAITTEET

Pipe tee w/gaskets insul.

EN

ITEM NO. 116515, 116519



116515, 116519

Pipe tee w/gaskets and fitted condensation insulation.
For use in ventilation and exhaust ducts.
The product is to prevent condensation, as the intake/exhaust is in
a warm zone.

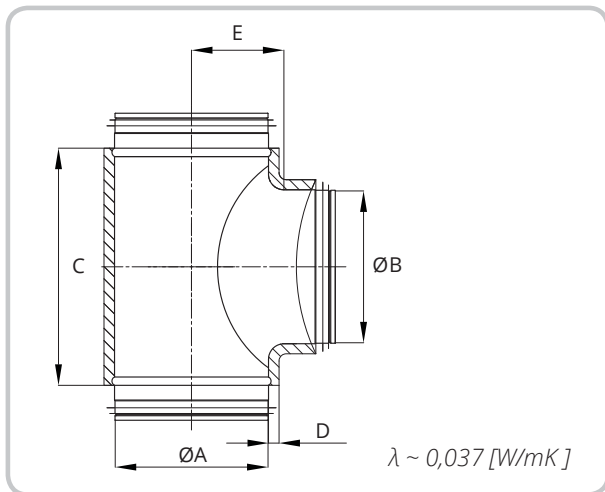
- Saves time and space.
- Provides reliable condensation protection.
- Facilitates installation between the unit and an insulated duct.

Art.nr.	GTIN	Diam.
116515	7023671165154	Ø200/Ø160 mm
116519	7023671165192	Ø200/Ø200 mm

Material

Galvanised steel, rubber gaskets and 19 mm foam rubber insulation. ($\lambda \sim 0,037$ [W/mK])

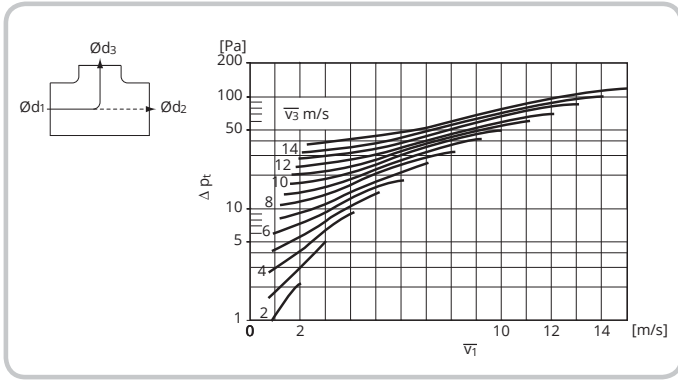
Dimensioned Drawing



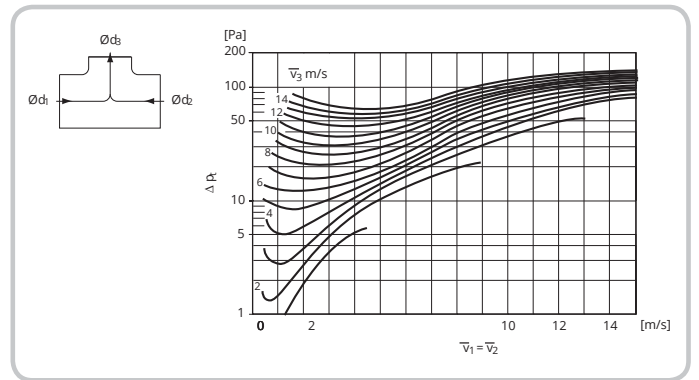
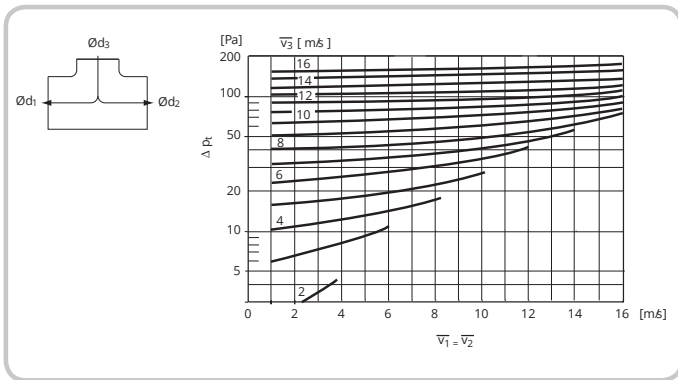
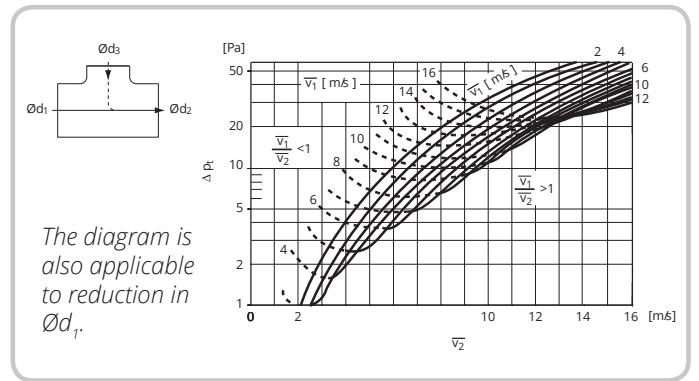
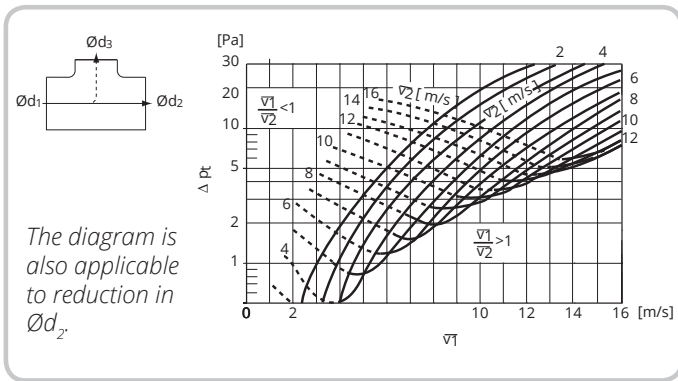
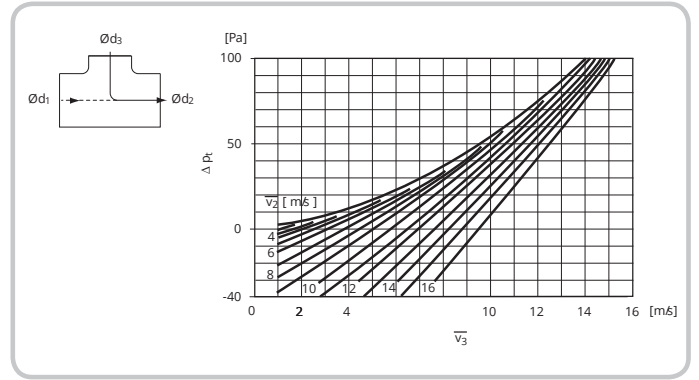
ØA	ØB	C	D	E	Weight
mm	mm	mm	mm	mm	kg
200	160	281	19	125	0,93
200	200	265	19	125	1,38

Pressure drop diagram

Supply air



Extract air



For more information, see www.flexit.com and installation instructions:
94007 FDV-DUCT SYSTEM/ACCESSORIES