

VAL

Washbasin

DIMENSIONS

Length	1200 mm
Width	420 mm
Height	115 mm

COLOUR AND FINISH

<input type="checkbox"/>	400 White LCC (LAUFEN Clean Coat)
--------------------------	-----------------------------------

OPTIONS

109 - without tap hole



SPECIFICATION TEXT

Charge 104 – 1 centre tap hole

MOUNTING ACCESSORIES EXCLUDED

Mounting set M10 x 140 mm, order no. 89988.2

Basin capacity (l) : 21

Bowl length (mm) : 1188

Bowl position : Central

Bowl width (mm) : 294

Glazed base

Installation type : Vanity, Wall-hung

Internal Shape : 6 - Rectangular

Material : Saphirkeramik

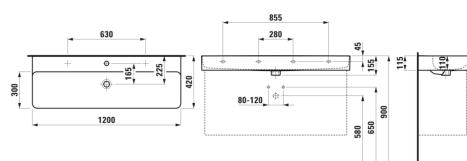
Number of fixing points : 2

Overflow type : Standard

Shape : Rectangular

Taphole configuration : No tapholes

TECHNICAL DRAWINGS



COMPATIBLE WITH

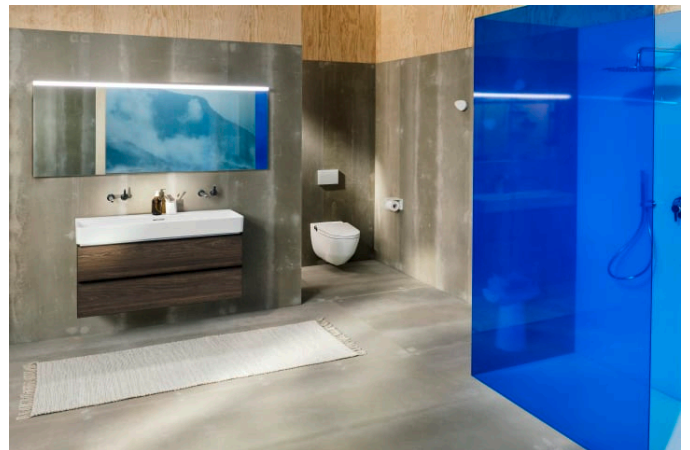


Vanity unit, 2 drawers,
matches washbasin
810289

H402472110...1









VAL

The extraordinary design potential of LAUFEN's revolutionary SaphirKeramik reveals itself in the bathroom collection Val, designed for the Swiss bathroom specialist by star designer Konstantin Grcic from Munich. Simple architectural lines, extremely narrow edges and fine surface structures make the washbasins of this collection globally unique. The Val range includes washbasins, washbasin bowls, trays, bathtubs and new bathroom furniture from the Space collection.

